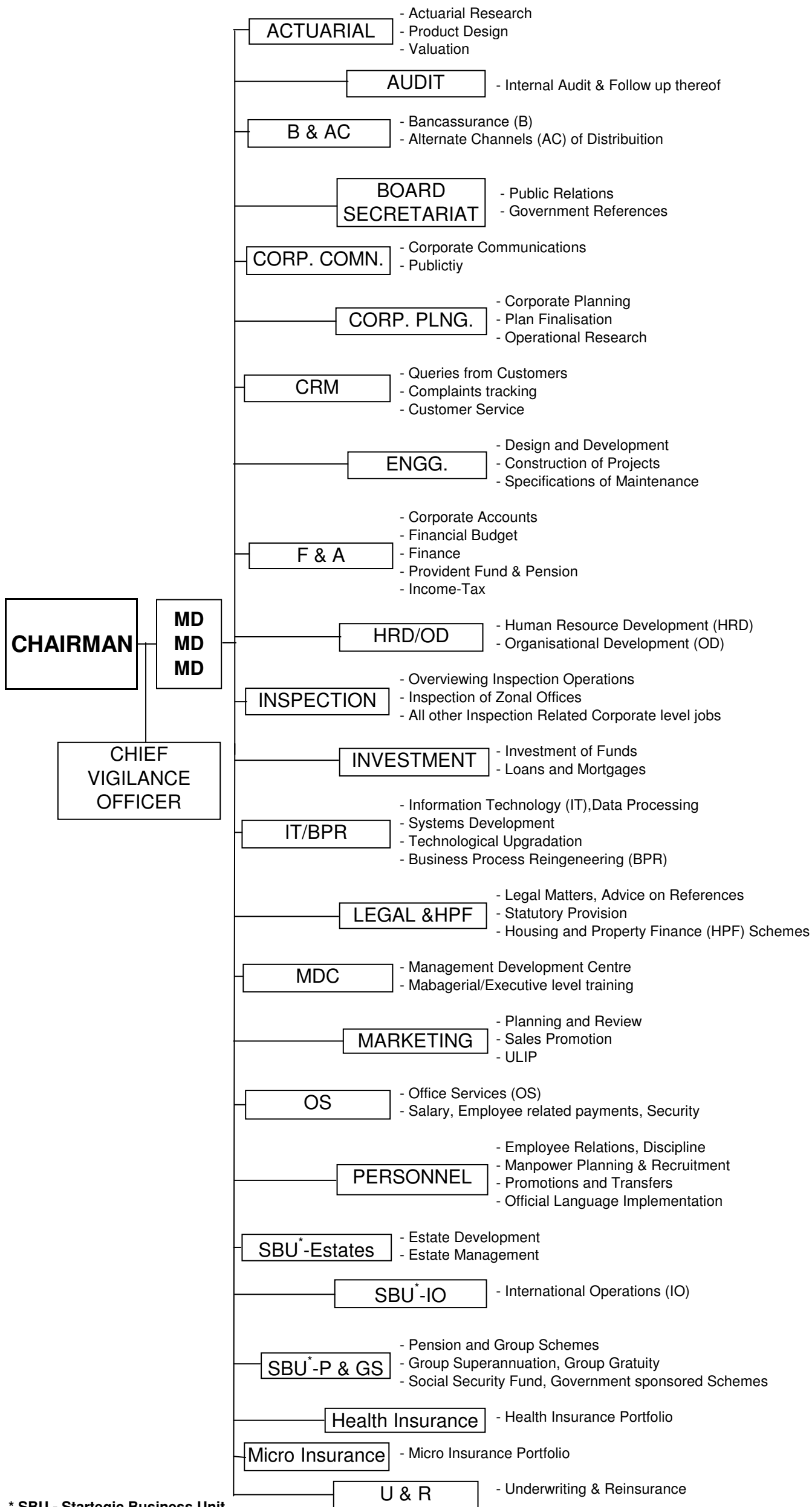


# ORGANISATIONAL STRUCTURE

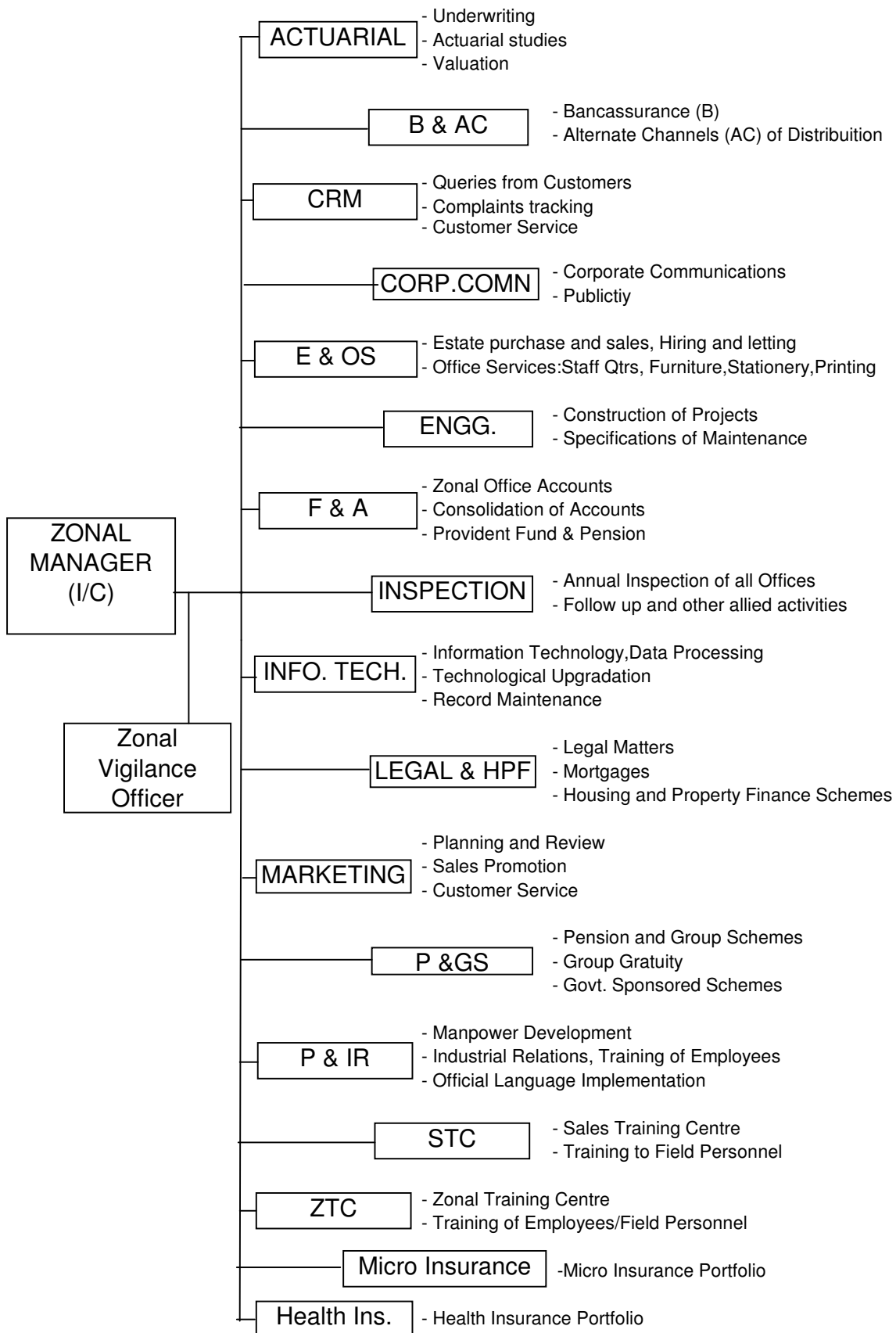


# ORGANISATION OF CENTRAL OFFICE IN LIC OF INDIA

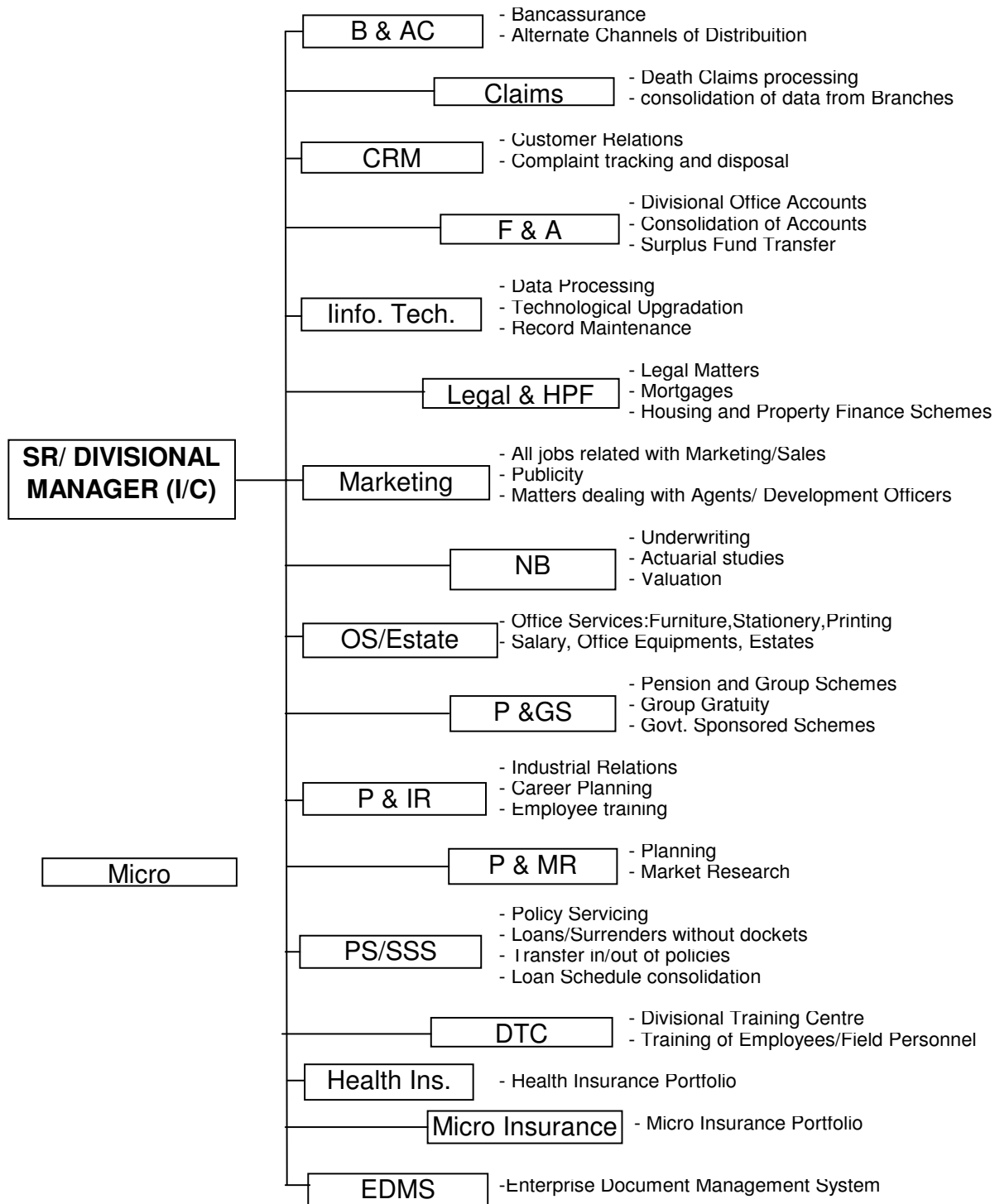


\* SBU - Strategic Business Unit

## ORGANISATION OF ZONAL OFFICE IN LIC OF INDIA



# ORGANISATION OF DIVISIONAL OFFICE IN LIC OF INDIA



**B & AC** Bancassurance and Alternate Channels

**CRM** Customer Relationship Management

**F & A** Finance and Accounts

**IT** Information Technology

**HPF** Housing Property Finance

**NB** New Business / Actuarial

**OS** Office Services

**P & GS** Pension and Group Schemes

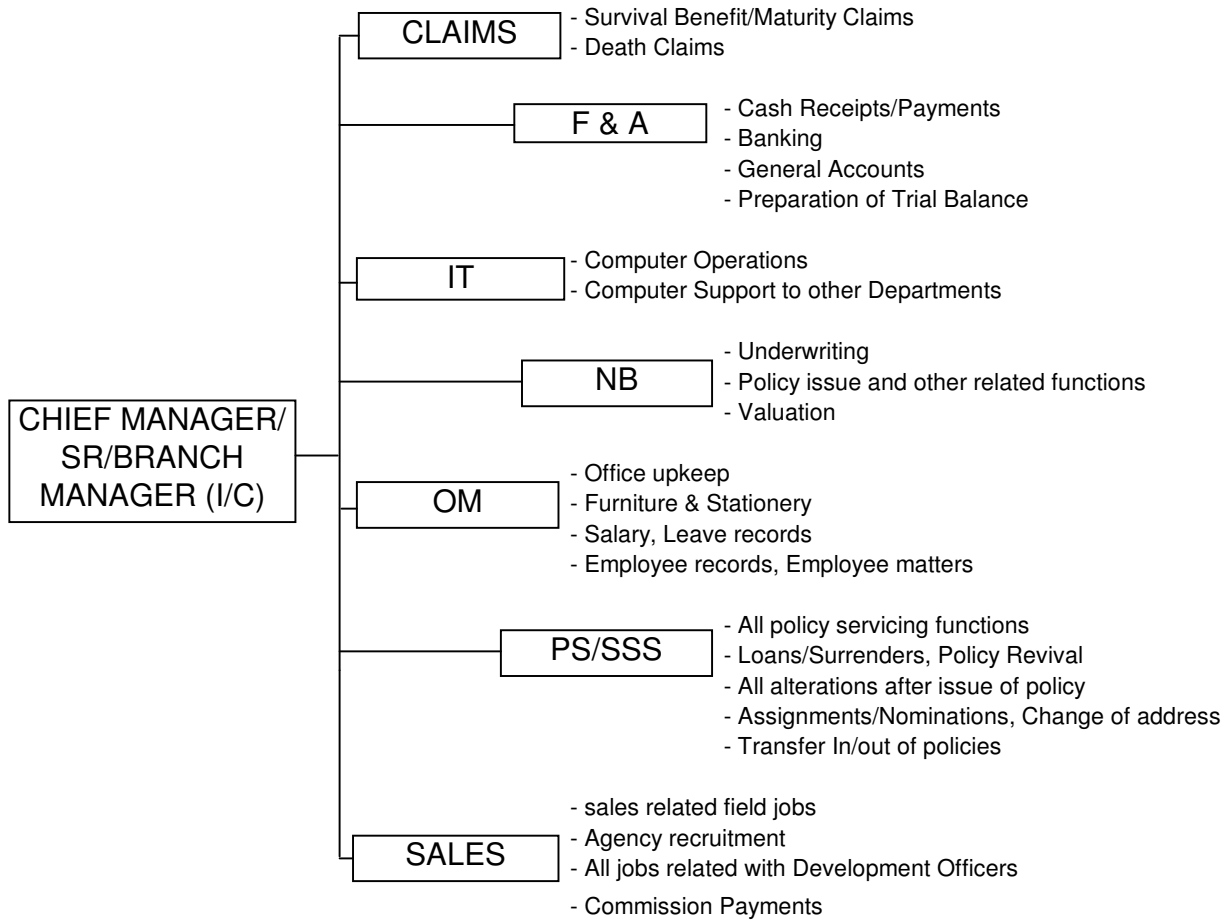
**P & IR** Personnel and Industrial Relations

**P & MR** Planning and Market Research

**PS** Policy Servicing

**SSS** Salary Saving Scheme

## ORGANISATION OF BRANCH OFFICE IN LIC OF INDIA



**F & A** Finance and Accounts  
**IT** Information Technology  
**NB** New Business  
**OM** Office Management  
**PS** Policy Servicing

**SSS** Salary Saving Scheme